

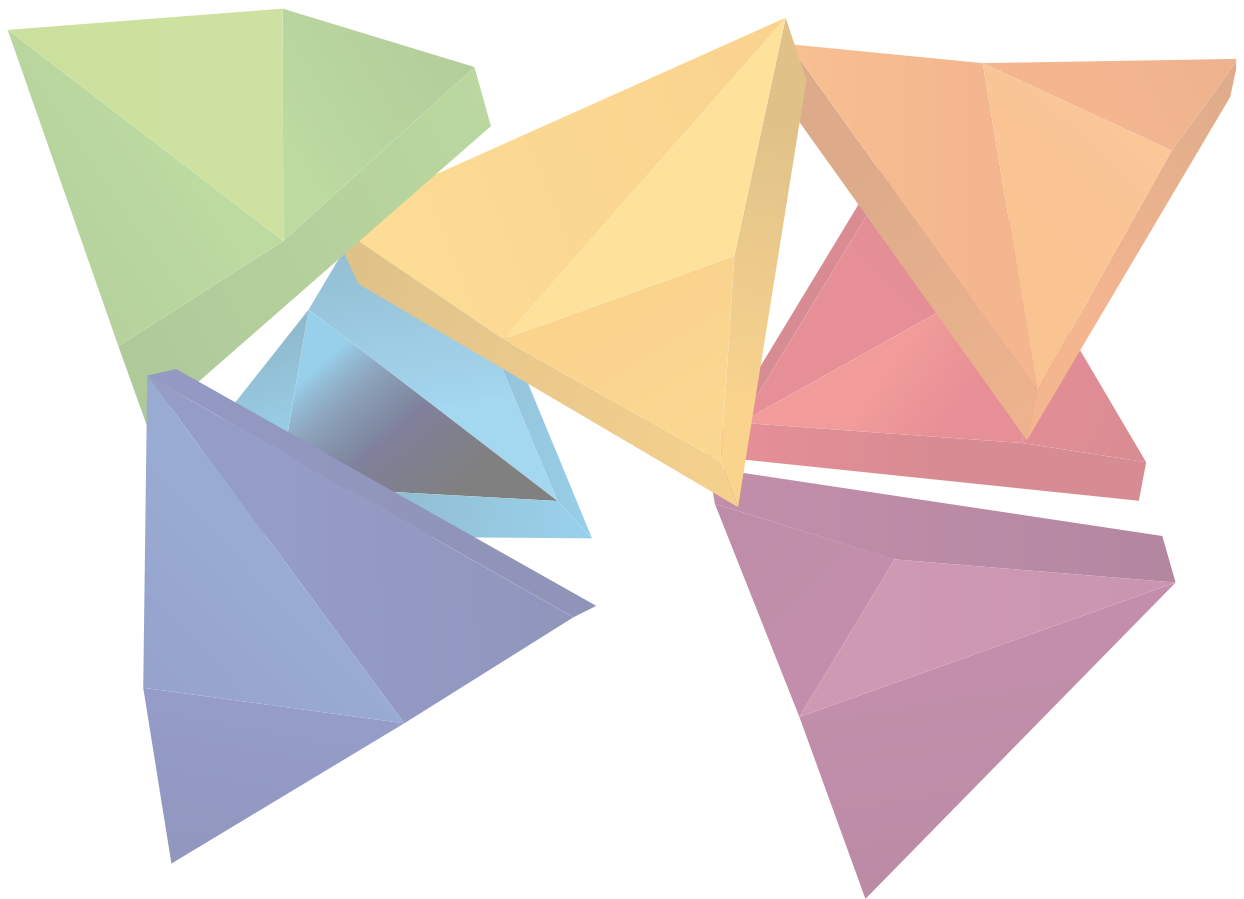
WOOD GROUP



WG INTETECH

A Wood Group business

Well Integrity Management Gap Analysis



Wood Group Intetech

Wood Group Intetech (WG Intetech) has been working with oil and gas operators around the world for more than 20 years, helping them to enhance the safety and improve the efficiency of their well operations.

Our specialist engineers, consultants and software solutions provide comprehensive support for integrity management, corrosion monitoring and materials engineering. They help address the full range of issues that challenge the integrity of wells.

Well Integrity Management Gap Analysis

WG Intetech offers comprehensive gap analysis that determines the current status of an operator's well integrity management processes and identifies the roadmap for a well integrity management system (WIMS) to achieve compliance with corporate policies and mandated standards.

A WG Intetech gap analysis will answer the following questions:

- What is the current status of your WIMS?
- Does your WIMS provide a complete and connected view of the integrity of your wells?
- Which industry regulations and standards does your WIMS need to meet?
- What is the optimum WIMS for your operations?
- Where do gaps exist and what actions are required?

A Structured Approach: Thinking it Through

WG Intetech works with operators to address all of the above questions, starting with the most important: where are you now and where do you want to be?

Once these two states are defined, it becomes much easier to develop a strategy to bridge any gaps that are identified. WG Intetech does this by adopting a professional, structured approach that delivers:

- Clear documentation of an operator's existing WIMS, including roles and responsibilities, processes and procedures, business rules and software tools employed
- A statement of what is required to comply with industry standards, regulations, corporate philosophies and business rules
- Conclusive analysis of the gap that exists between the current and optimum states, including a comprehensive list of the actions required, delivered in a concise report
- Recommendations to achieve the optimum WIMS based on an assessment of the operator's individual needs and specific requirements
- A clearly defined implementation strategy and timeline to achieve the required status of the defined WIMS



Continuous Improvement

The recommended WIMS may be documented in a well integrity management manual (WIMM) or incorporated into the organisation's existing documentation. This forms a starting point: as well integrity is managed over time, the document can be updated to reflect lessons learned and knowledge gained. In this way, a continuously improving WIMS can be maintained indefinitely.

Selecting the Optimum Well Integrity Management System

The aim of a WIMS is to ensure the elements needed to safely maintain and optimise production throughout the lifecycle of a well are handled effectively. The WIMS also ensures that the integrity status of wells is transparent and accessible to all stakeholders across the enterprise at all times.

Operators with an effective WIMS are able to:

- Maximise the productivity of operations
- Minimise the risks to health and safety and the environment
- Work within a framework which allows lessons to be learned and incorporated into continuously improving well integrity practises
- Document and demonstrate best practise to all stakeholders
- Demonstrate a commitment to safe and efficient operations
- Show clear compliance with regulations and company policies



A Partner You Can Trust

Operators come to WG Intetech for our expertise and because of our reputation. We are a trusted partner to some of the industry's largest oil and gas companies and provide a reliable and responsive service that delivers on specification, on time and within budget.

Our clients value our commitment, industry knowledge and know-how to get to the heart of their issues. WG Intetech offers:

- Unrivalled domain expertise
- Access to market-leading technology
- A proven track record of delivery
- A collaborative approach
- Global presence, local capability

WG Intetech has established a reputation for providing practical guidance and high-quality products and solutions. Our experienced teams will help identify the best WIMS for your organisation's needs which, without adding unnecessary burdens, makes the process of well integrity management transparent, measurable and practical.

Contact info@intetech.com to find out more about how the WG Intetech gap analysis approach can help your organisation.

Wood Group Intetech

Wood Group Intetech Ltd (Head Office & Europe)

Tel: +44 1244 336 386

Wood Group Intetech North Sea (UK)

Tel: +44 1224 347 455

Wood Group Intetech North Sea (Norway)

Tel: +47 51 37 25 49

Wood Group Intetech Americas

Tel: +1 281 675 3044

Wood Group Middle East & Africa

Tel: +971 2 641 8500

Wood Group Intetech Asia Pacific

Tel: +61 7 32 588 062

Wood Group Intetech Asia Pacific (Malaysia)

Tel: +60 3 220 30059

Wood Group Intetech Asia Pacific (Indonesia)

Tel: +62 21 8370 2455

Wood Group Intetech Asia Pacific (Brisbane)

Tel: +61 7 32 588 062

Wood Group Intetech Asia Pacific (Perth)

Tel: +61 8 6314 2615

Intetech.com

info@intetech.com



**Safety
& Assurance**

Relationships

**Social
Responsibility**

People

Innovation

**Financial
Responsibility**

Integrity